

Houses and Homes- Pre-School and EYFS

Early Years Foundation Stage Framework links:

- *Understanding the world: The world: 'Children know about similarities and differences between living things. They talk about how environments might vary from one another. They make observations of animals and explain why some things occur, and talk about changes'* (Department for Education, 2014).
- *People and Communities: 'They know about similarities and differences between themselves and others, and among families, communities and traditions'* (Department for Education, 2014).
- *Health and self-care: 'Children know the importance for good health of physical exercise, and a healthy diet, and talk about ways to keep healthy and safe'* (Department for Education, 2014).

Using the Farm to support this topic

Take your students to visit a variety of the animals around the farm. Discuss the following points:

- What shape is the house?
- What colour is the house?
- How many animals share this house?
- How is it different to your house?
- How is it different to the other animal's houses? Why is it different?

Pointers for teachers

Look out for these animals around the farm; most can be viewed in/around their usual houses at any given time.

Sheep and Goats.

Sheep and goats live in a *barn*, or have a *field shelter* outside.

Suggested animal activities if available: feeding the sheep and goats in the hands-on area, Tractor and Trailer rides.

Poultry

Chickens live in a *coop*. Our chickens come into the *barn* and live in the *hutches* during winter.

Suggested animal activities if available: Egg Collecting.

Rabbits and Guinea Pigs

Rabbits and guinea pigs live in a *hutch*.

Suggested animal activities if available: Funny Bunnies.

Pigs

Pigs might live in a *sty*. Ours live in pig *arc* outside, or live inside in the *barn*.

Suggested animal activities if available: Piggies Lunchtime or Teatime.

Cows

Located at various places around the farm.

Cows might live in a *cow shed*. Ours have a *field shelter* outside, or live inside in the *barn*.

Suggested animal activities if available: Tractor and Trailer rides, Cow Milking Demonstration.

Ponies and Donkeys

Located at various places around the farm.

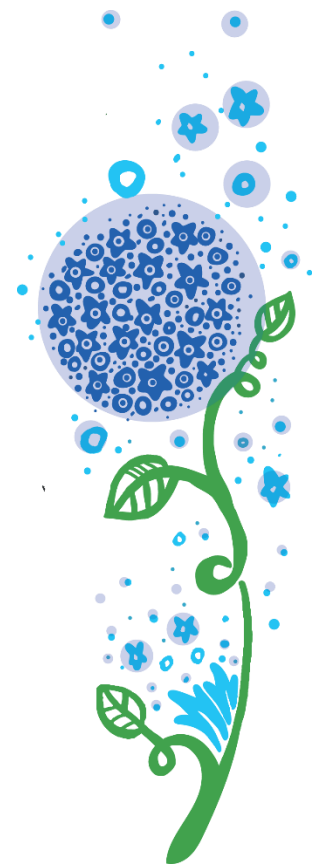
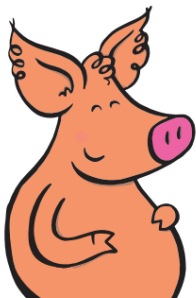
Ponies and donkeys might live in a *stable*. Ours have a *field shelter*.

Suggested animal activities if available: Tractor and Trailer rides.

Suggested Classroom activities

The following resources and discussion points can be used before or after your visit.

- Discussion and description of what a human home looks like. Students could draw what their own home looks like. Discuss why humans (and animals) need a house.
- Discussion of what animal homes might be called, rather than a 'house'.
- Worksheet: Where do you live? A match up activity: students can draw lines to the animal and their homes.



Where do you live?

Draw a line to match the animal to its home.

